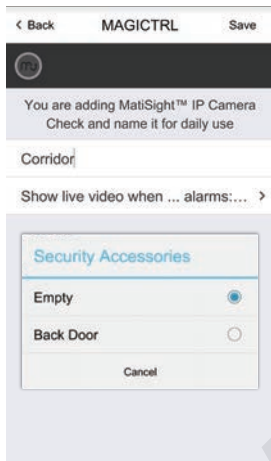
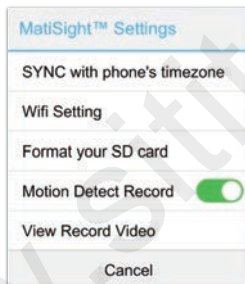
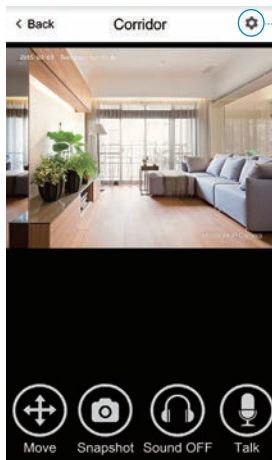


Manage and operate MatiSight™ IP Camera 1/3



- Like adding accessories, tap + to scan QR code on camera then name it.
- If you want to be informed to check the real-time video (like the camera facing the door) when alarm is triggered by certain accessory (like the door/window sensor installed on the front door), you can use [inform when ... alarms:] and tick the related accessories.
- You would be asked to install a video plug-in the first time visiting to the camera. It won't bother you anymore.

Manage and operate MatiSight™ IP Camera 2/3



SYNC with phone's timezone:

SYNC with phone's timezone. Synchronize the timezone with your phone's

Wifi Setting:

Connect IP camera wirelessly.

Format your SD card:

Erase and make your SD card recordable.

Motion Detect Record:

Automatically record video when any motion is detected (5s before + 15s after).

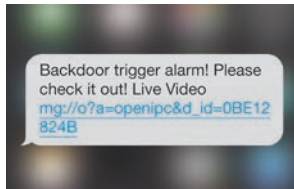
View Record Video:

List all the recorded video on your SD card, can be sorted by date. Click to play.

- **Move:** Watch by dragging on the screen or tapping Move button and control with joystick.
- **Snapshot:** Snapshot the current screen and save it to phone album.
- **Sound:** Listen to the sound around MatiSight™.
- **Talk:** Talk while tapping and it plays immediately via camera speaker.

Manage and operate MatiSight™ IP Camera 3/3

Appendix: How MatiSight™ works when alarm occurs?



1. If a thief intrudes and triggers some accessory alarm, the emergency contacts would get informing SMS and alarming call right after that.

2. Magictri™ captures the informing SMS right after that and reminds the user to check live video from the camera paired before. Users get informed immediately even when the App is exited.

3. Just one tap to show you the real-time video! The thief is nowhere to hide!